

「 HOME LIFT 」



With an enclosed cabin, one-touch controls and fully automatic sliding doors, the H300 gives you the features of a full-size elevator, but its compact design means that it can be fitted easily into most buildings.





# EXPERIENCE TRUE LUXURY WITH THE H300 HOME LIFT

Quieter than a silent room, the H300 home lift brings you the very best in comfort, and has elegant styling to match your home.

Driven by a unique gearless motor and cogbelt system, the H300 glides between floors, giving you the smoothest and quietest ride imaginable. The sound level inside the lift is lower than the average background noise in a silent room – that's how quiet it is.

The luxurious performance is matched by the H300's elegant looks. Choose from an exclusive selection of cabin fittings to define a style for your H300 that coordinates with your interior.

## ① Smooth From Start to Finish

The exceptionally smooth ride in an H300 lift begins and ends gently with the soft start and stop device fitted on all lifts. Simply press and release your destination button and relax until the doors open again at the end of your ride.

## ② Design Your Lift


With an exclusive range of styling options, your H300 lift can truly become part of your home. Choose one of our H300 Collection cabins, or create your own design from our range of high-quality finishes for walls, floors, accents, control panel and ceiling.

## ③ Easy to Install

The H300 can be installed indoors or outdoors, either in its own structural metallic shaft, or in a masonry shaft. The lift mechanism is fully contained within the shaft and the lift runs on standard mains electricity.

H300 lifts are fully compliant with all relevant European safety standards and are suitable for use in private or public buildings.





When you choose H300,  
you're choosing the best  
in comfort and luxury.



The backlit H300 control panel looks stunning and is easy to use.

# FEATURES

## COMFORT FOR ALL

### ① Control Panel

The sleek backlit control panel in the cabin is available in a choice of finishes and has a crystal-clear digital display panel. Floor indicator displays for the landings are also available as an option.

The display panels also give information about the status of the lift, and they show diagnostic codes for easy service and maintenance.

### ② Designed to Fit

The H300 is a compact, self-contained lift system, designed to be installed in many different types of building. A flexible range of cabin sizes and door configurations means that your lift will be designed to give the best fit in your available space.

### ③ Clean Technology

The cogbelt system that drives the H300 is exceptionally clean because it does not require hydraulic fluid or oil. The shaft has no rivets and the panels are available silicon-free.

The lift is designed so that servicing and maintenance can be carried out quickly and efficiently.

### ④ Keeping You and Your Family Safe

The lift is protected by a back-up battery power supply. A battery guard continuously monitors the charge level to ensure that there is always enough power in the batteries to run the lift in case of a power-cut.

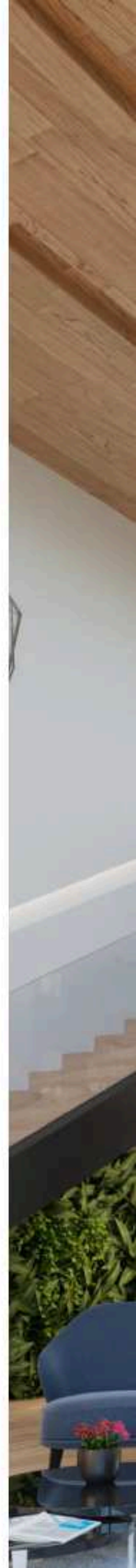
A handrail, an alarm button and two-way communication are all included as standard. When installed in public buildings, the lift can be secured with a selection of locking options.

# STANDARD CABIN LUXURY MADE EASY

## Standard: Style Options

<b>Walls</b>	Coloured film finish (Skinplate), stainless steel or painted in choice of colour
<b>Floor</b>	Floor safety vinyl in choice of three colours
<b>Mirror</b>	Half-wall
<b>Panoramic Wall</b>	Half -wall or full-wall, in transparent glass
<b>Lighting</b>	Three LED spotlights
<b>Styling</b>	-
<b>Accents</b>	-
<b>Control Panel</b>	Black
<b>Handrail</b>	Black or stainless steel

The Standard Cabin has a clean and streamlined look that blends discreetly into your surroundings.





# ELEGANCE CABIN: A WORLD OF CHOICE



## Elegance: Style options

<b>Walls</b>	Choice of high pressure laminates in different texture effects
<b>Floor</b>	Stone, carpet or vinyl flooring in choice of colours.
<b>Mirror</b>	Slim vertical, half-wall or full-wall
<b>Panoramic Wall</b>	Half-wall or full-wall, in transparent glass
<b>Lighting</b>	Choice of LED lighting configurations
<b>Styling</b>	Choose a cabin style from the H300 Collection or design your own.
<b>Accents</b>	Contrasting corner and central panel accents.
<b>Control Panel</b>	Black, mirrored steel or gold
<b>Handrail</b>	Stainless steel or gold

Express your style with the elegant finishes and contrasting colour accents in the Elegance Cabin range. Create your own look, or choose a design from our H300 Collection.

The H300 has its own structural metallic shaft, or it can be installed unobtrusively in a masonry shaft.



## H300 collection: Modern



Modern Europe



Modern Americas



Modern Asia

### 1. Modern Europe

Wall, bright wood 4515; accent, black 7021; ceiling, round; flooring, grey vinyl; mirror, none; handrail, stainless steel, 2 pieces.

### 2. Modern Americas

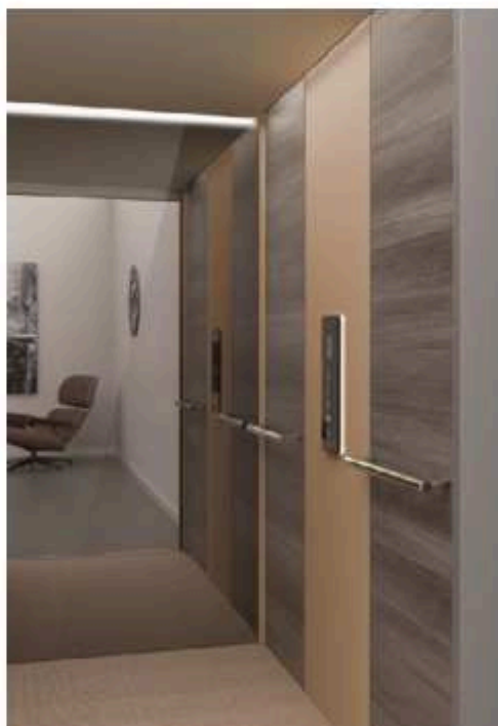
Wall, concrete 3331; accent, blue 5024; ceiling, plain; flooring, grey vinyl; mirror, slim vertical; handrail, stainless steel, 2 pieces.

### 3. Modern Asia

Wall, silk TX2606; accent, red 3003; ceiling, opal; flooring, grey vinyl; mirror, none; handrail, stainless steel, 2 pieces.

(2 piece handrails for 1400 wide cabin only)

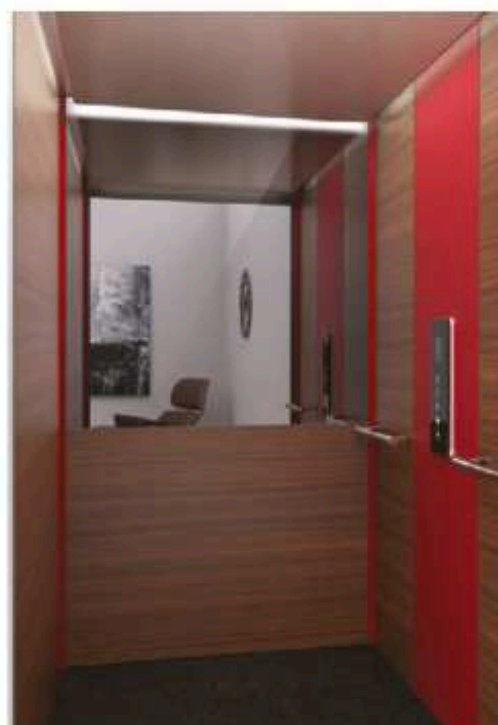
## H300 collection: Classic



Classic Europe



Classic Americas



Classic Asia

### 4. Classic Europe

Wall, warm wood 4511; accent, beige 1019; ceiling, plain; flooring, sand carpet; mirror, full wall; handrail, stainless steel, 2 pieces.

### 5. Classic Americas

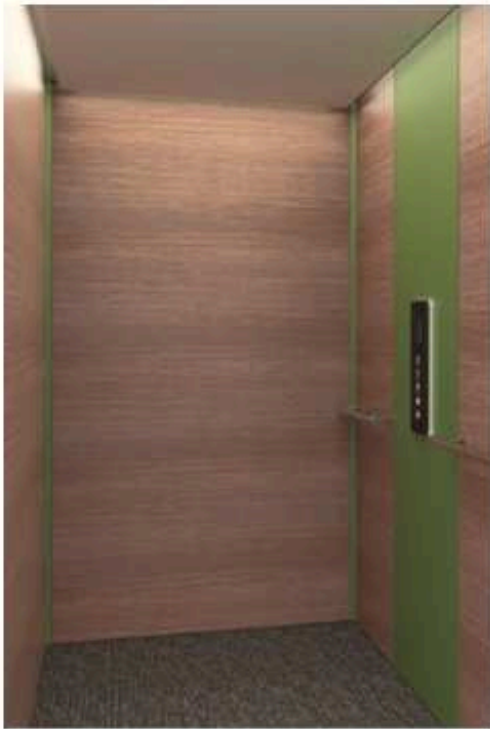
Wall, linen tx3318; accent, light grey 7035; ceiling, plain; flooring, grey vinyl; full height panoramic wall; handrail, stainless steel on panoramic wall.

### 6. Classic Asia

Wall, dark wood 4303; accent, red 3003; ceiling, plain; flooring, grey vinyl; mirror, half wall ; handrail, stainless steel 2 pieces.

(2 piece handrails for 1400 wide cabin only)

## H300 collection: Natural



Natural Europe



Natural Americas



Natural Asia

### 7. Natural Europe

Wall, warm wood 4533; accent, green 6011; ceiling, plain; flooring, grey carpet; mirror, none; handrail, stainless steel, 2 pieces.

### 8. Natural Americas

Wall, woodgrain TX4485; accent, dark grey 7012; ceiling, plain; flooring, sand carpet; mirror, none; handrail, stainless steel, 2 pieces.

### 9. Natural Asia

Wall, bright wood 4367; accent, green 6011; ceiling, plain; flooring, grey carpet; mirror, none; handrail, stainless steel, 2 pieces.

(2 piece handrails for 1400 wide cabin only)

## H300 collection: International



International Modern



International Natural



International Classic

### 10. International Modern

wall, limestone 868; accent, steel mirror;  
ceiling, plain; flooring, granite effect - white;  
mirror, none; handrail, stainless steel, 2 pieces

### 11. International Natural

Wall, limestone 868; accent, steel mirror; ceiling, plain; flooring, granite effect - white; mirror, none; handrail, stainless steel, 2 pieces

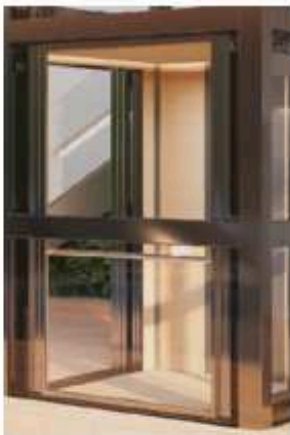
### 12. International Classic

Wall, concrete 546; accent, steel gold; ceiling, plain; flooring, granite effect - sand; mirror, none; handrail, stainless steel, 2 pieces

(2 piece handrails for 1400 mm wide cabin only)



# CABIN OPTIONS GLASS & MIRRORED WALLS



Full/Half  
Glass Wall



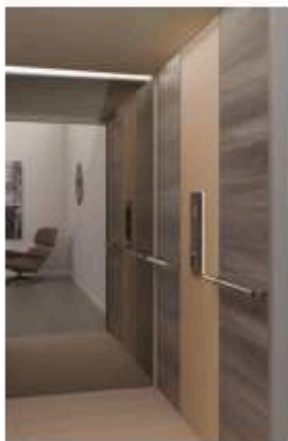
Mirror:  
Slim Vertical

The H300 cabin can be fitted with full-height panoramic glass walls, a half-height panoramic wall, or a mirror.

These options are available on both Standard and Elegance cabins and can be fitted on any side of the cabin except for the control panel side or the door sides.



Mirror:  
Half Wall



Mirror:  
Full Wall

H300 has elevator features contained in the size of a home lift.



## Doors

The H300 has fully automatic sliding doors on the cabin and landings, giving all the comfort and convenience of a standard elevator.

### Sliding Door Options

Sliding doors are available with the following options:

- Glass panels with a stainless steel or painted frame
- Stainless steel
- Steel, painted in your choice of colour
- Steel, finished with a coloured or metallic film (skinplate)
- Side opening (2 panels) or central opening (4 panels)

### Folding Doors

Folding doors in the cabin with swing doors on the landings are also offered as an option. In smaller shaft sizes, folding doors can sometimes provide a wider opening, which may be needed for wheelchair access.

The metallic shaft is quick and easy to install. It can be fitted with either plain steel panels, painted in your choice of colour, or with glass panels from the selection below.

### Glass Panels

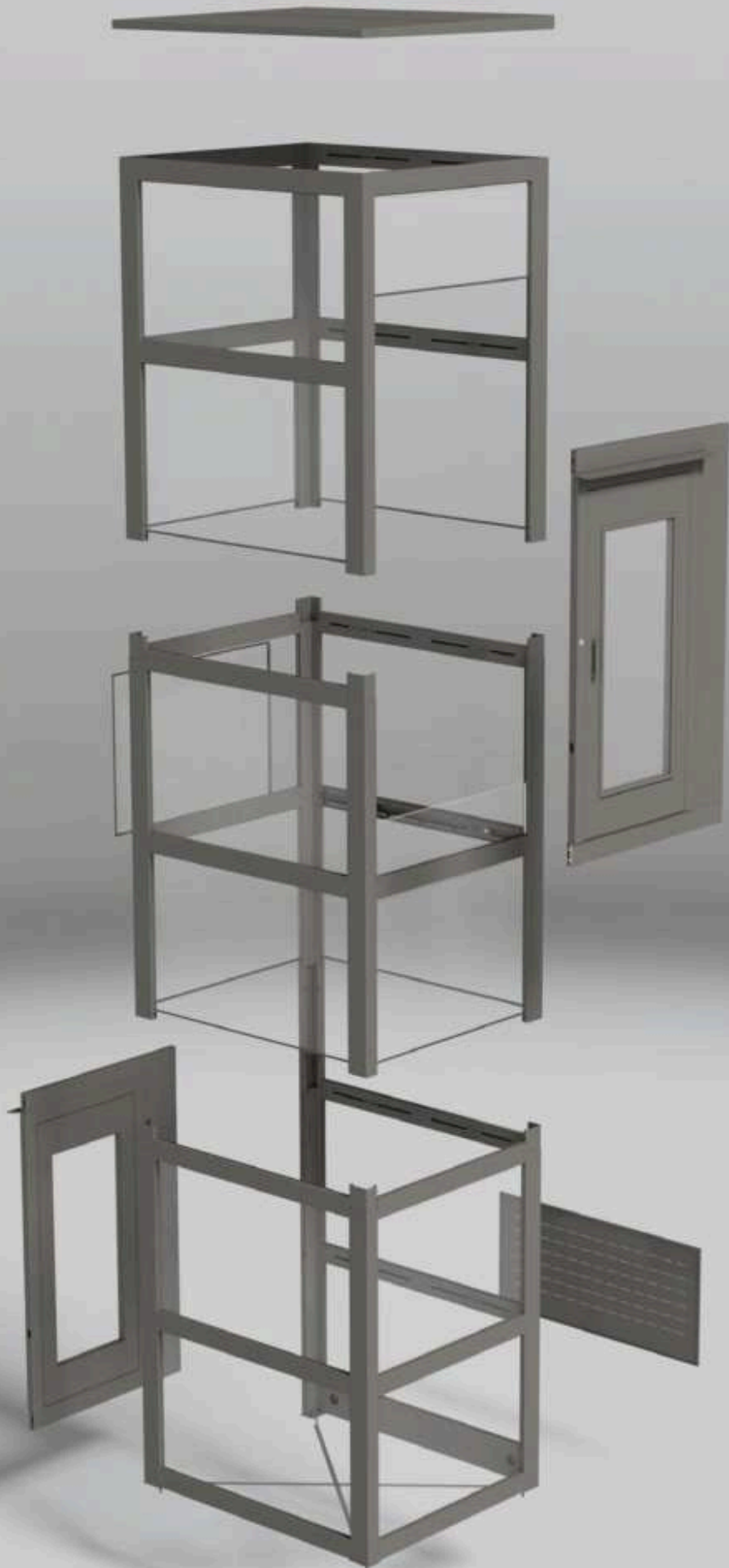
The following options are available for the glass panels in the shaft and in the doors. Cabin glass walls and half-height windows are always supplied in transparent glass.



### Metallic Colours

In addition to the standard colour range, the following metallic colours are offered for the shaft structure, shaft panels and landing doors.

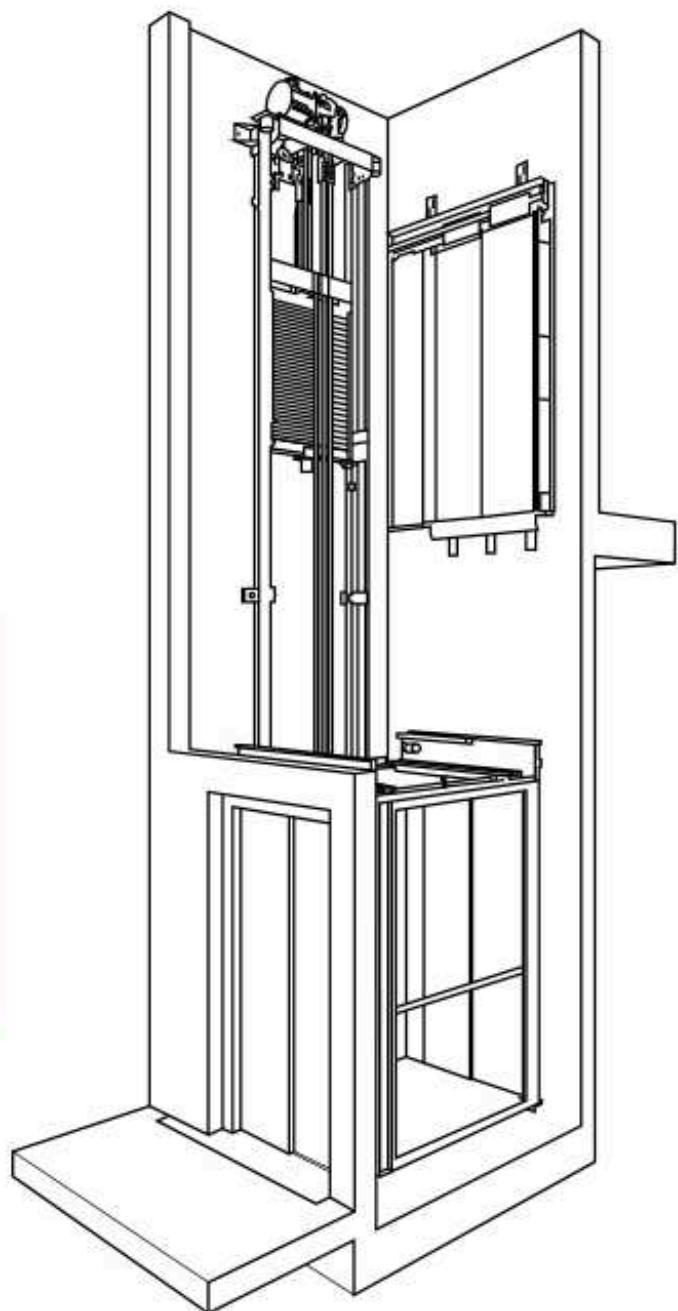




# TECHNICAL SPECIFICATION LUXURY IN EVERY DETAIL

Full details of technical specifications, exact dimensions and available plan layouts can be found in the H300 product catalogue.

The architect who designed our house recommended an H300 lift. It's a delight to use because it runs so quietly and smoothly – and it looks great in our hallway too.



## Specification

<b>Technical Compliance</b>	Machinery Directive 2006/42/EC Reference standard: EN81-41
<b>Drive System</b>	Cogbelt and counterweight system driven by a gearless motor
<b>Rated Speed</b>	Europe: max. 0.15 m/s (2006/42/EC). Outside Europe: Up to 0.4 m/s, where permitted by local regulations.
<b>Travel Height</b>	1100–18000 mm
<b>Number of Stops</b>	Max. 6 stops per lift
<b>Doors</b>	Max. 2 doors per floor/ 12 doors per lift
<b>Type of Accesses</b>	Frontal, lateral, opposite or adjacent
<b>Pit</b>	Metallic shaft: 140 mm. If a pit is not possible the lift can be used with a ramp. Masonry shaft: 140 or 250 mm depending on configuration. See catalogue for details.
<b>Shaft type</b>	Metallic structural shaft or masonry shaft.

<b>Shaft Top Height</b>	Structural shaft: 2450–2630 mm Masonry shaft: 2350–2450 mm
<b>Cabin Types</b>	Fully enclosed with sliding doors or with folding doors
<b>Controls</b>	Automatic (one-touch) controls on cabin and landing. Call reservation on landings
<b>Application</b>	Indoor or outdoor
<b>Emergency Lowering</b>	Battery operated emergency lowering with uninterruptible power supply (UPS)
<b>Control Voltage</b>	24 V
<b>Motor</b>	2.8 kW
<b>Power Supply</b>	1-phase 230 V 50/60 Hz 16A
<b>Maximum Power</b>	1.85 kW (when used at 0.15m/s) 3.5 kW (for up to 0.4 m/s)
<b>Circuit Breaker/ RCD</b>	16A tripping curves C/ 30mA class A or B
<b>Rated Load</b>	250–400 kg according to cabin size.

# ABOUT

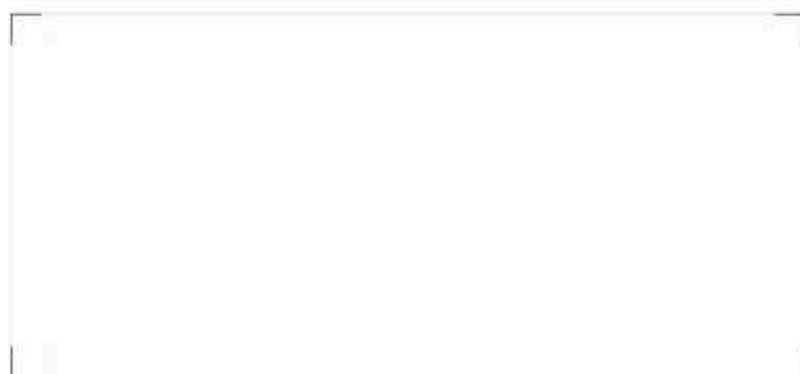
TK Home Solutions offers smart mobility solutions in and around the home. As part of TK Elevator, active in over 100 countries, we bring global technology into everyday life. We combine international innovation with personal, local service, focusing on quality, reliability, and ease of use, supported by our own team of advisors and technicians.

**TK Home Solutions –  
Globally strong, locally trusted.**





HAVE WE  
INSPIRED  
YOU?



**TK Home Solutions Srl**  
Via S. Cannizzaro 2  
56121 Pisa - Italy  
[www.tke-homesolutions.it](http://www.tke-homesolutions.it)